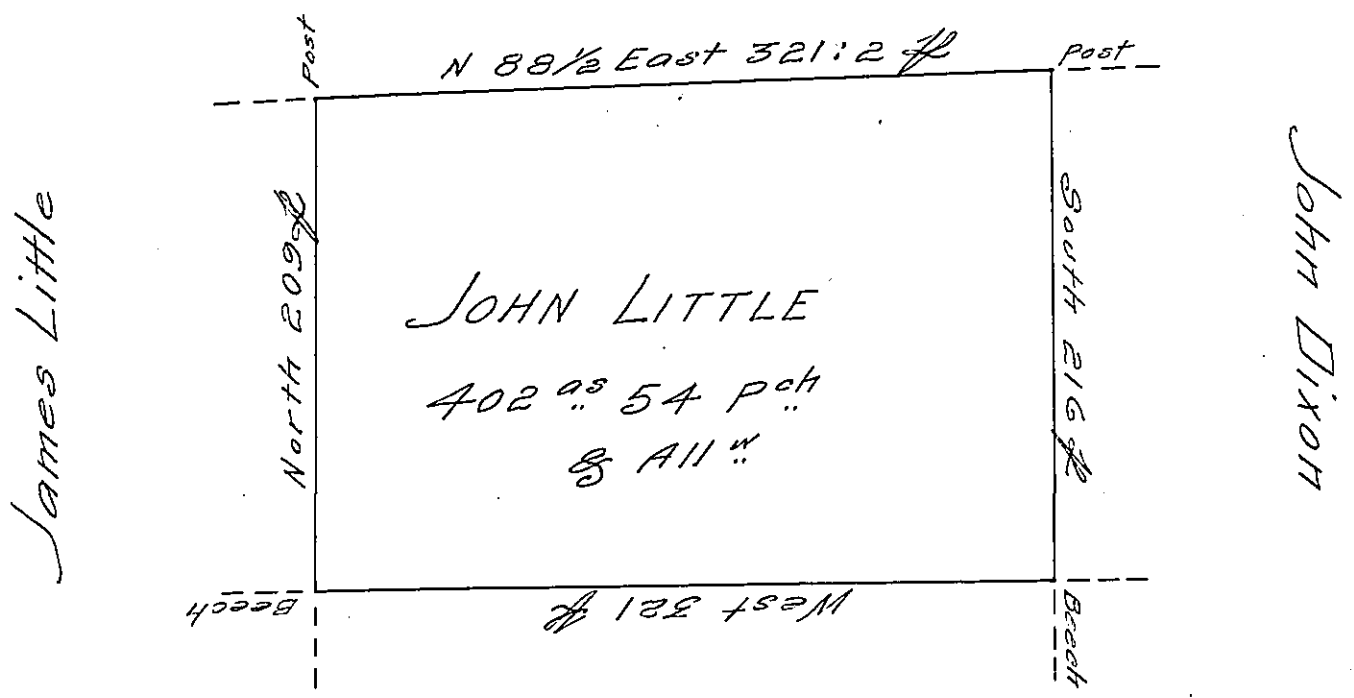


District Line



Saml Ramsey

Situate on the East side of French Creek
in Allegheny County Containing 402 Acres
54 perches and allowance of Six Cent for
Roads &c. Surveyed the 27th day of May 1795
In pursuance of his Improvement Bearing
date the 26th day of May 1795

W^m Power D^r. Sr.

To Daniel Brodhead Esq^r.
Surveyor General

IN TESTIMONY that the above is a copy of the original remaining on file in
the Department of Internal Affairs of Pennsylvania, made
conformably to an Act of Assembly approved the 16th day of
February, 1833, I have hereunto set my Hand and caused
the Seal of said Department to be affixed at Harrisburg,
this twenty-seventh day of September 1906

Isaac D. Brown
Secretary of Internal Affairs.